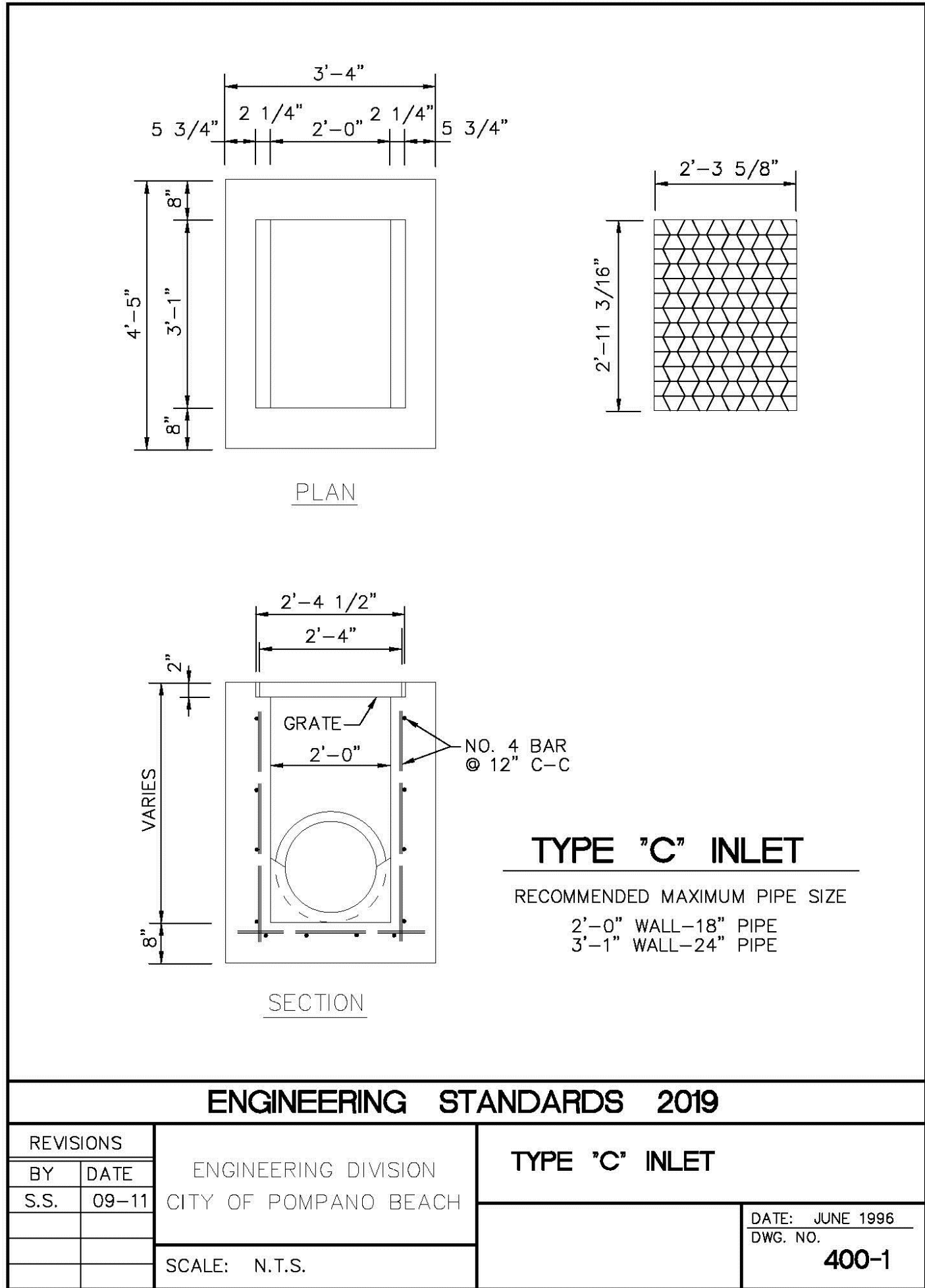
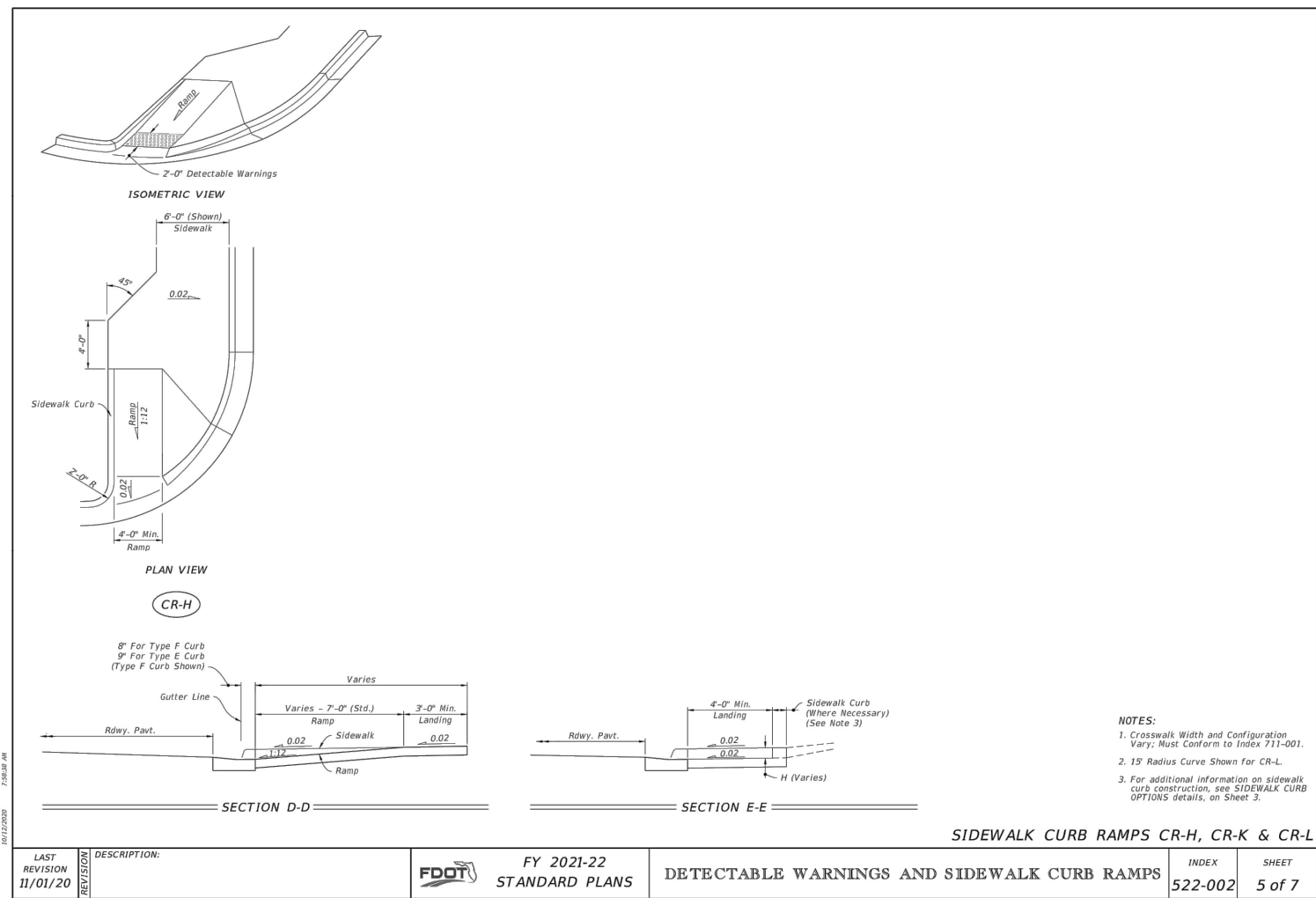


THIS DOCUMENT, TOGETHER WITH THE CONCEPTS AND SECTIONS PRESENTED HEREIN, IS AN INSTRUMENT OF SERVICE. IT INTENDS ONLY FOR THE SPECIFIC PURPOSE AND CLIENT FOR WHOM IT WAS PREPARED. REUSE OF ANY UNPUBLISHED MATERIALS, WHETHER WRITTEN, AUTHORIZED, OR UNAUTHORIZED, BY BOWMAN CONSULTING SHALL BE WITHOUT LIABILITY TO BOWMAN CONSULTING.

J:\CITY-STANDARDS\2019 Standards Details\Drainage 4-1.dwg, 11/2/2018 10:24:00 AM

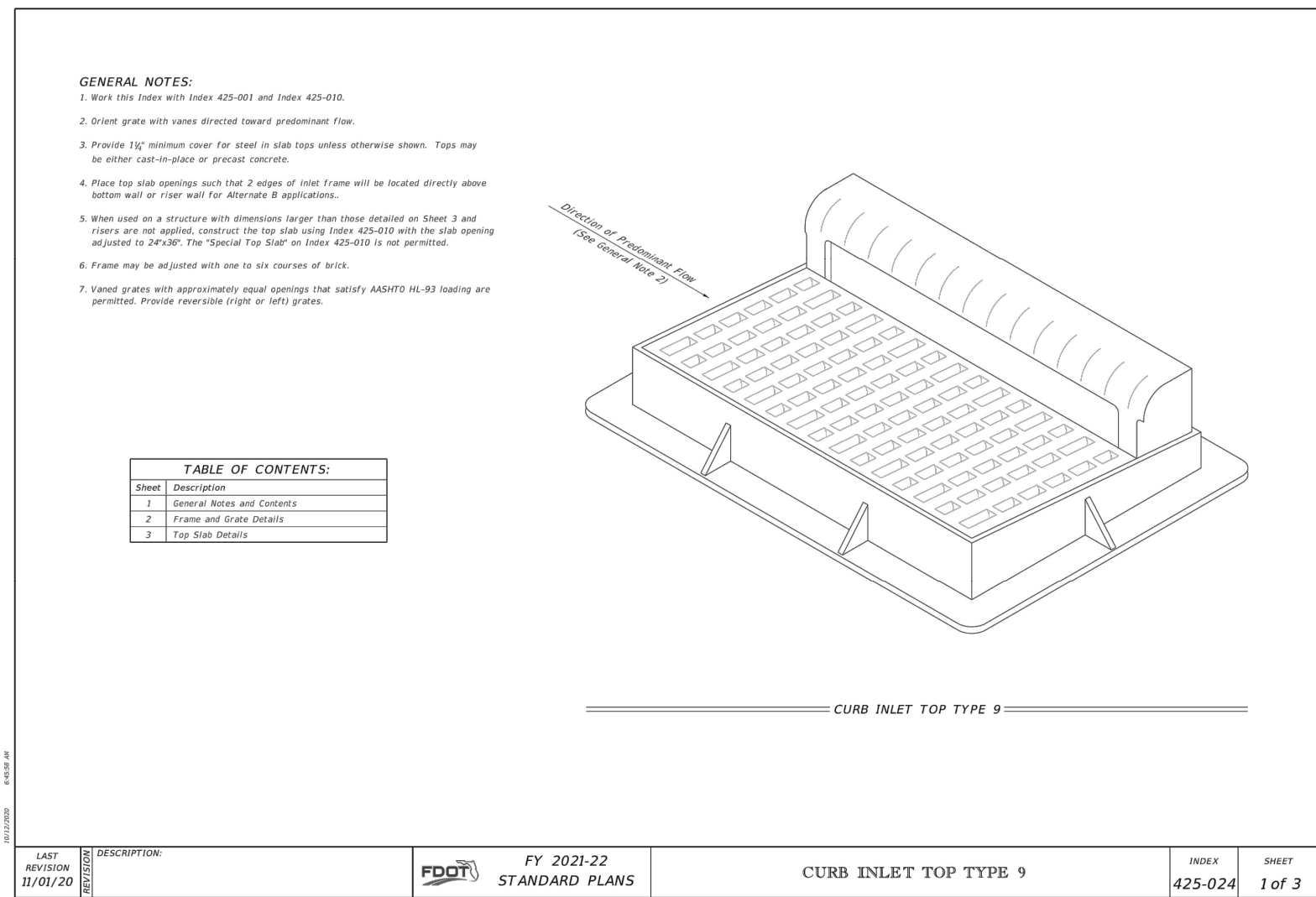


1 TYPE C INLET
CS.0 NOT TO SCALE

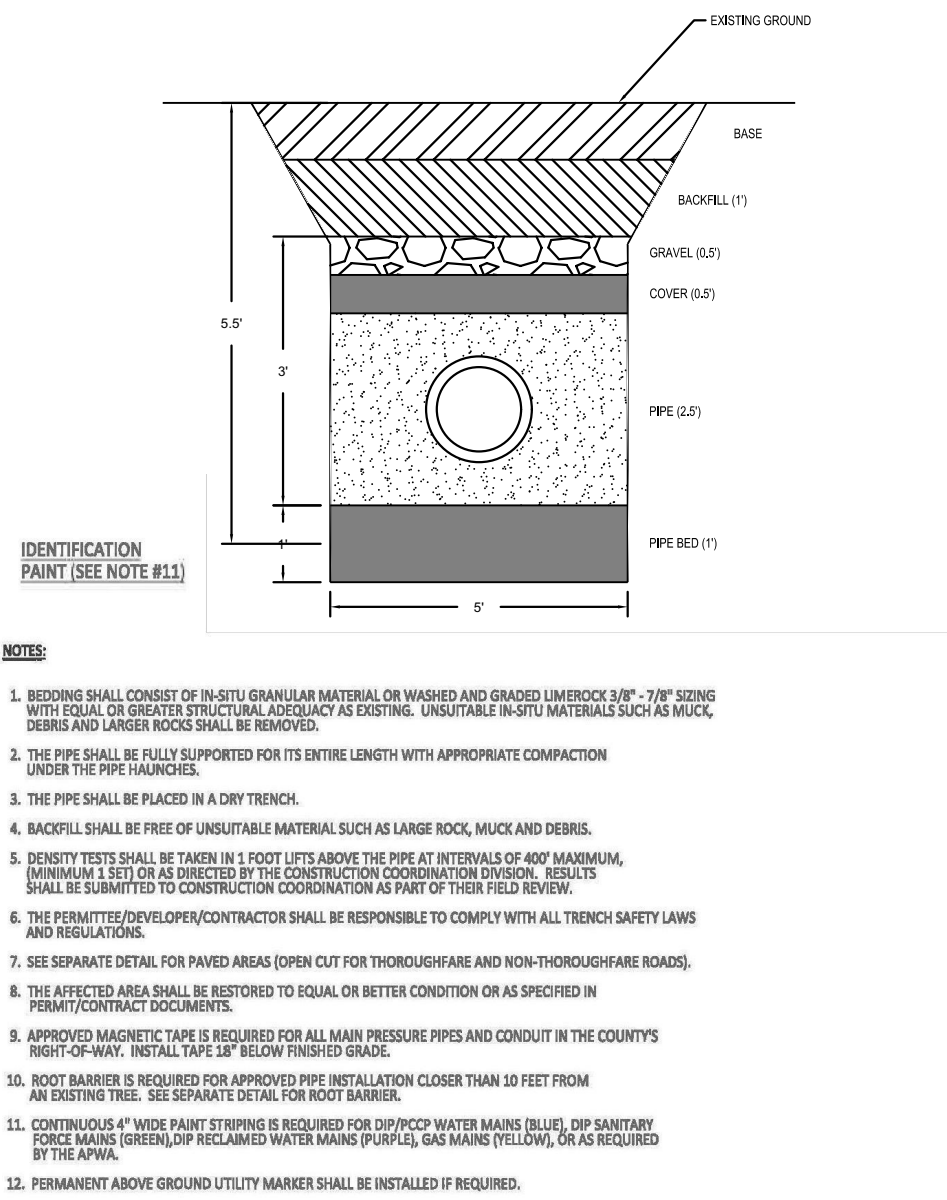


3 SIWALK CURB RAMP
CS.0 NOT TO SCALE

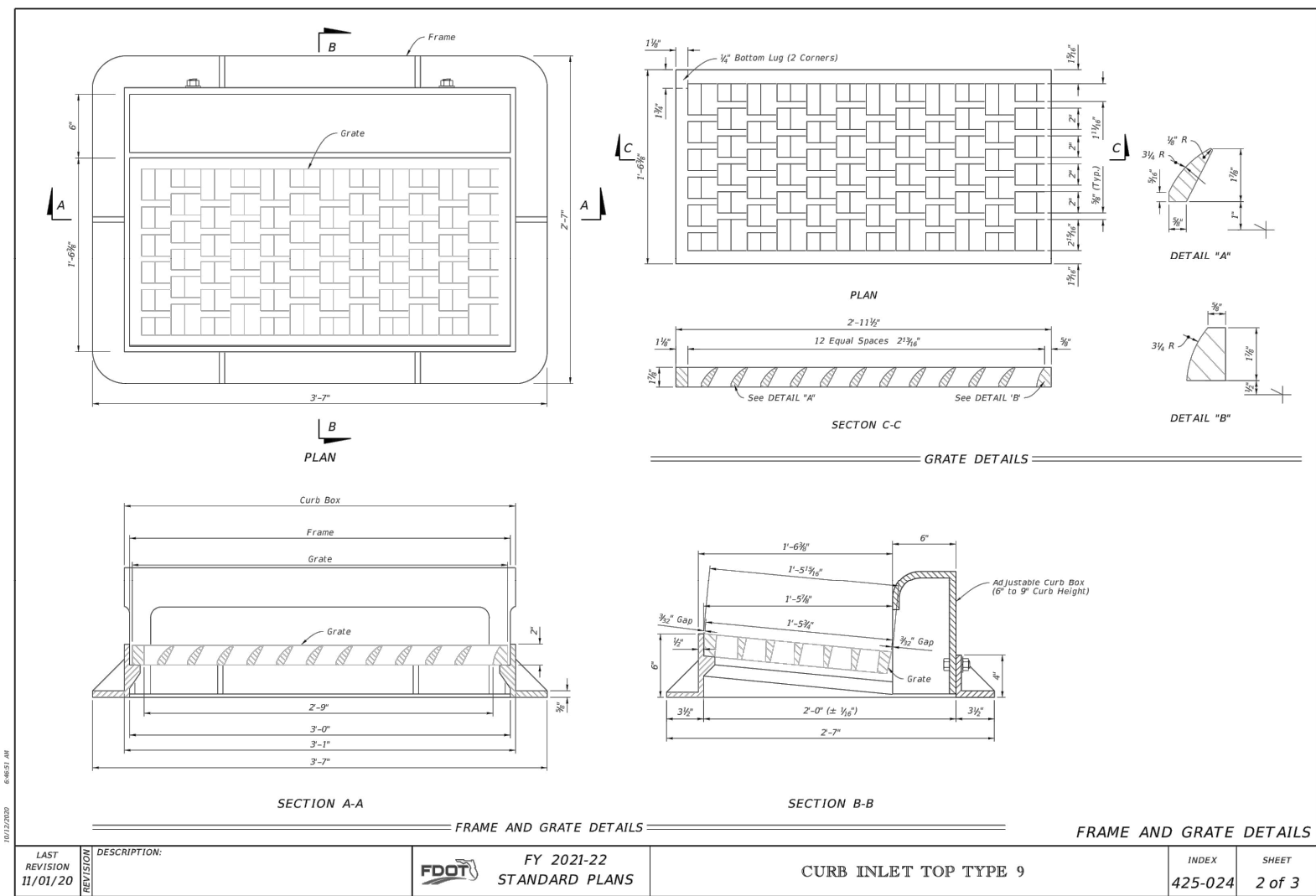
4 CONCRETE FLUME
CS.0 NOT TO SCALE



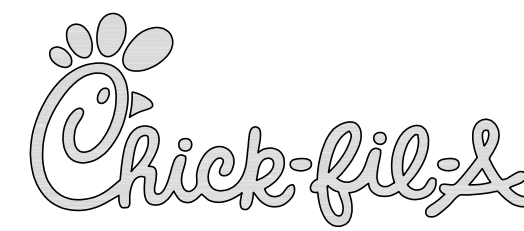
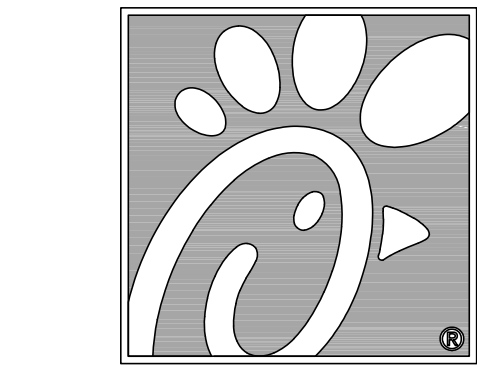
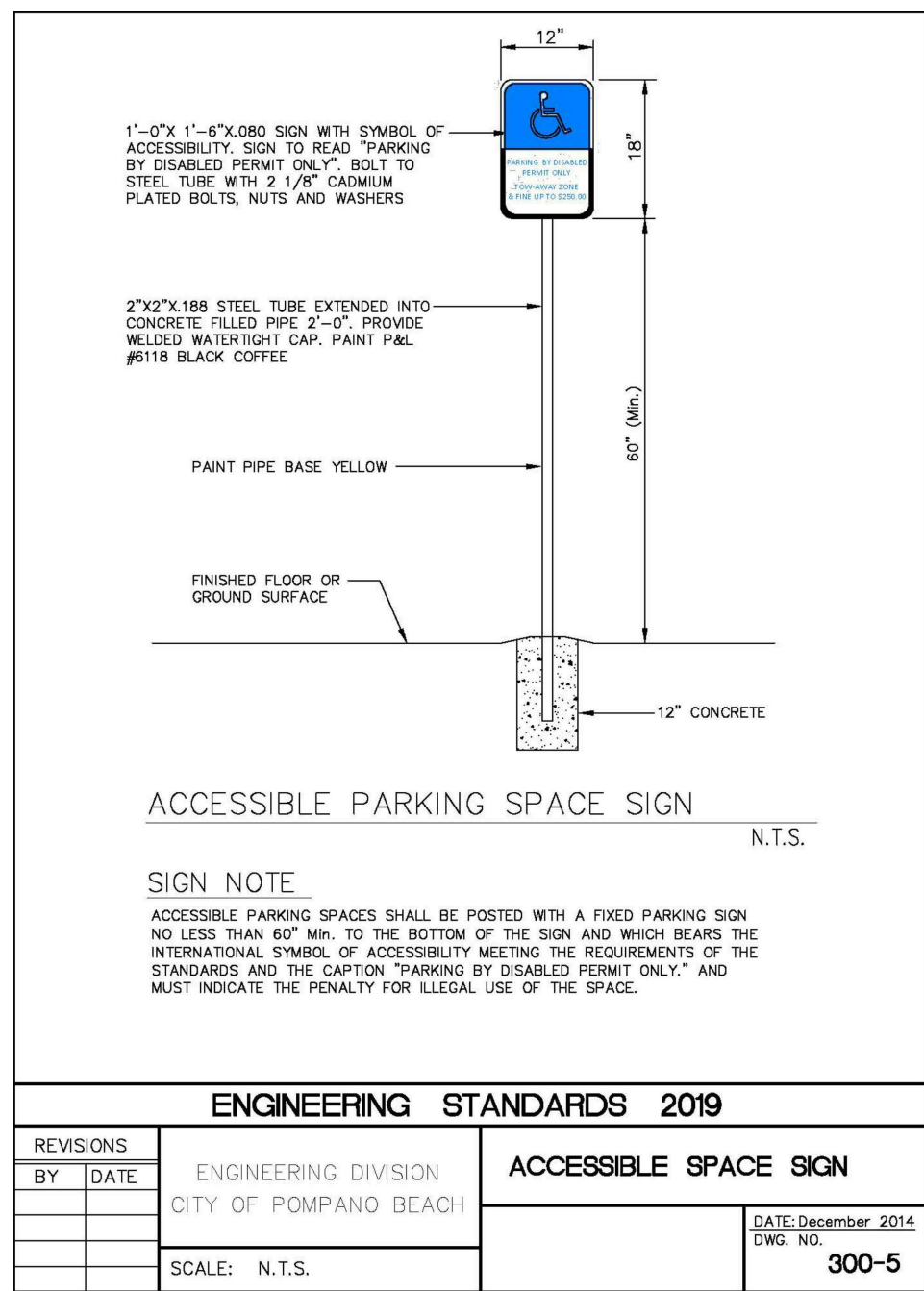
2 CURB INLET TOP TYPE 9
CS.0 NOT TO SCALE



5 EXFILTRATION TRENCH
CS.0 NOT TO SCALE



6 ACCESSIBLE SPACE SIGN
CS.0 NOT TO SCALE

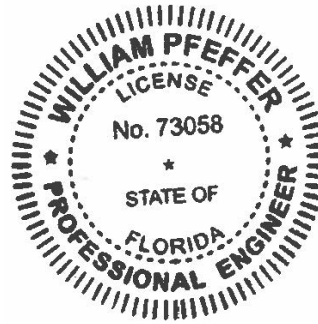


5200 Buffington Rd.
Atlanta Georgia,
30349-2998

Bowman

Certificate of Authorization License No. 30462
610 SE 7th St, Suite 300
Fort Lauderdale, FL 33316
Phone: (954) 344-6466
www.bowman.com
© 2021 Bowman Consulting Group Ltd

Seal



WILLIAM PFEFFER, P.E.
LICENSE NO. 73058
8/13/2021

CHICK-FIL-A
POMPANO BEACH
2250 NORTH FEDERAL HIGHWAY
POMPANO BEACH, FL 33062

FSU# 2483

REVISION SCHEDULE
NO. DATE DESCRIPTION

CURRENT DESIGN 2021-005
NOTE APPLIED
PROJECT # 010014-01-138
PRINTED FOR PERMIT
DATE 8/13/2021
DRAWN BY ST

PERMIT
WHITE AND DRAINAGE DETAILS
SHEET NUMBER

PZ2-16500001
9/22/21